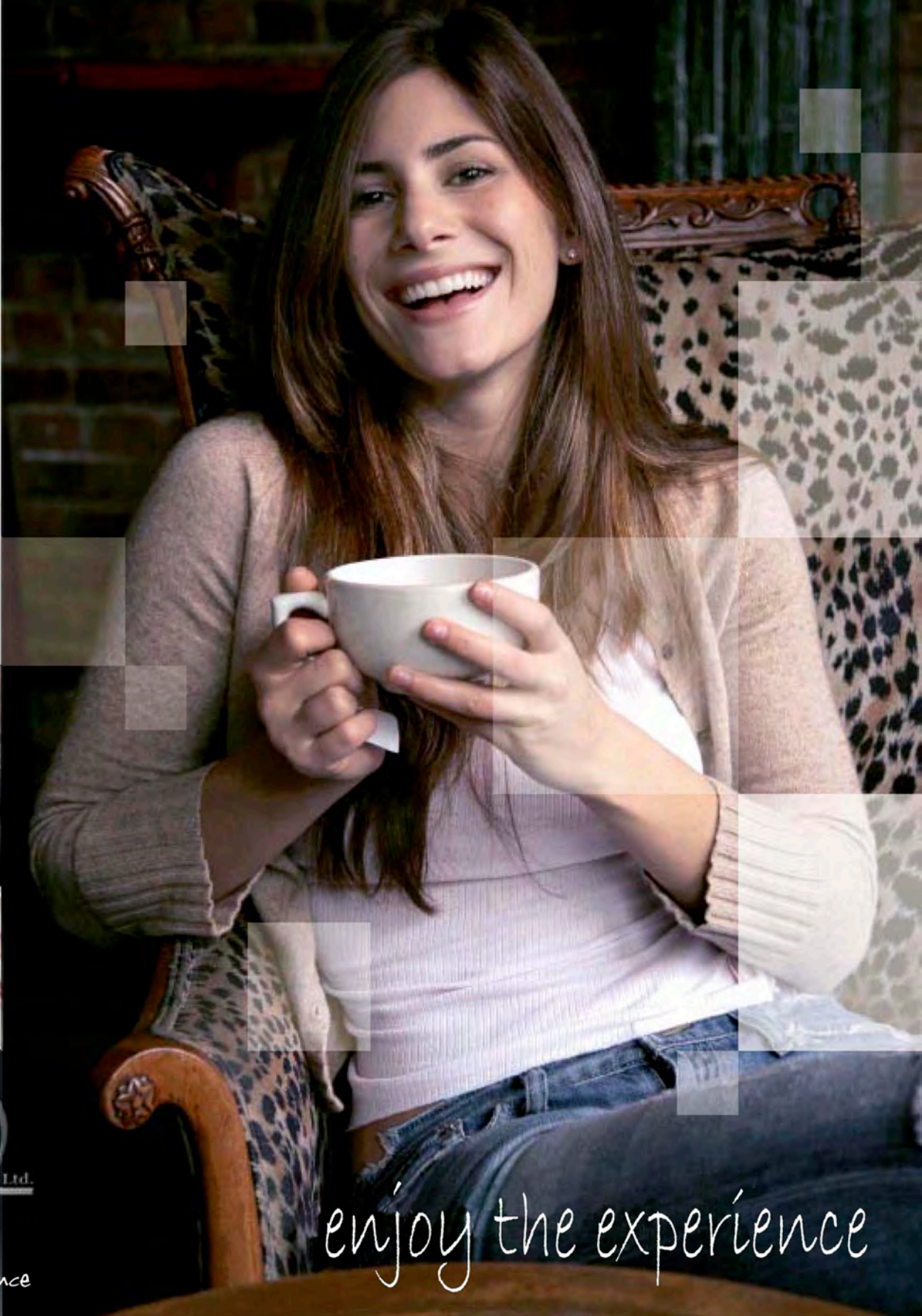




The
OLYMPIAN
III



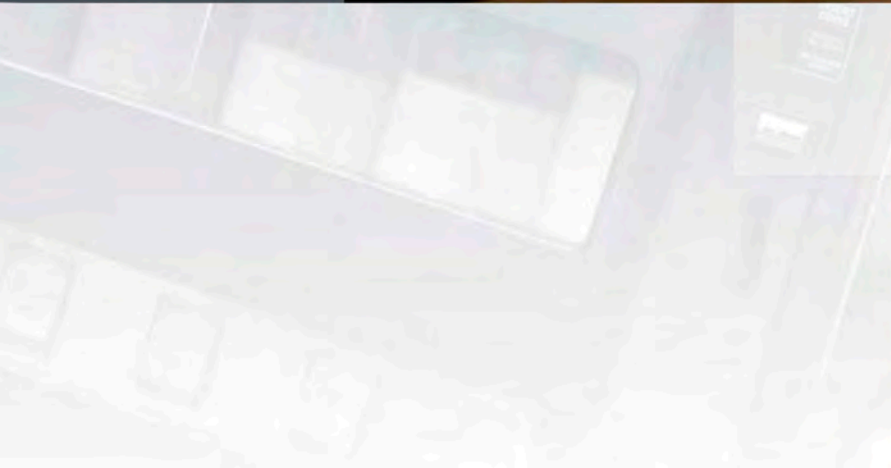
enjoy the experience



DarenthMJS Ltd.

enjoy the experience

enjoy the experience



The OLYMPIAN III

This delightful little machine from the DarenthMJS dispenser range offers excellent value for money and requires the absolute minimum of cleaning. Its compact style and superb styling is ideal for those customers who wish to use china cups or mugs but do not want the daily cleaning requirements associated with fully automatic dispense equipment.

A fantastic choice for those who require a simple solution to their hot drinks requirements, but who also recognise the cost savings and convenience that only a vending solution can deliver.



▶▶▶▶▶ Olympian III shown with matching base cabinet

▶▶▶▶▶ Olympian III partnered with the WaterBoy rehydration station



DRINK SELECTION

The Olympian III can be specified to handle either pre-packed bottles or refillable ingredient jars.

This superb and extremely compact table top loose ingredient machine offers users a choice of 3 main and 2 secondary ingredients, together with programmable free on demand hot water or one touch automatic cup fill.



Olympian III partnered with the SnackBreak MINI - the ideal "pick me up" station



Olympian III partnered with the IceBreak can dispenser - a superb total refreshment solution

OTHER FEATURES

Ingredient volumes are individually adjustable for each selection.

Internal plastic cup dispenser.

Optional side mounted in-cup leaf tea dispenser if required.

Easy clean drip tray and ingredient spillage area.

Incredibly simple and cost effective.

Can be specified to have full electronic coin mechanism.

Separately lockable cash box.

Ingredients clearly visible through crystal clear vision panel.

The Olympian III by DarenthMJS is a delightful little machine from the loose ingredient dispenser range which offers excellent value for money and requires an absolute minimum of cleaning. A fantastic choice for sites which require a simple solution to their hot drinks requirement but also recognise the cost savings and convenience that only a vending solution can deliver.



Easily refillable ingredient jars



Machine fitted with pre-packed ingredient bottles (optional)



Ideal for use with china cups and mugs

The
OLYMPIAN
III



TOTAL DESIGN & MANUFACTURE

DRINKS CHOICE AND CAPACITY

Selections:

3 main ingredients plus 2 secondary.

Ingredients:

Please specify pre-packed bottles (1 ltr) or refillable jars (1.1 ltr).

Internal cup dispenser:

Manual system mounted on top of machine.
Capacity approx 110 cups.

WATER REQUIREMENTS:

Hand filled for demonstration purposes or connected to a mains water supply.

Mains water connection via 3/4" BSP fitting (connection hose available).

Mains water pressure 1.5 - 10 bar (0.15 Mpa - 1Mpa).

Optional pumped water system (from storage vessel situated in base cabinet) ideal for occasional situations where a mains water supply cannot be provided.

COIN CONTROL

Available as either a free vend machine, or with full electronic coin mechanism which accepts all coins and token.

Accumulated credit allows multiple vends to be made.

Free vend master override switch.

Separately locking cash box.

POWER REQUIREMENTS:

220-240 V, 50 Hz, single phase.

2.5 KW, 13 A plug fuse.

Machine fitted with 1.7 metre mains lead.

OPTIONS

Matching base cabinet providing large (lockable) storage space together with convenient drink preparation area.

Water booster pump for superior drink mixing.

Extended width drip tray offering additional and extremely useful storage area.

Side mounted in-cup dispense module to offer additional product choice (eg. leaf tea).

High quality water filtration system for optimum drink quality.

IceBreak can dispenser offering five selections of *ice cold* cans.

SnackBreak MINI offering a wide choice of up to 32 snack, crisp, confectionery, PET bottle and healthy eating options.

WaterBoy rehydration station serving extremely high quality Brita filtered, chilled or carbonated water.



DIMENSIONS (WxHxD):

Machine: 560mm x 550mm x 385mm

Cabinet (optional): 560mm x 910mm x 550mm

Machine & Cabinet 560mm x 1460mm x 550mm

WEIGHT:

Machine: 32Kg Cabinet: 24Kg

For further information and advice on the extensive range of total refreshment solutions manufactured by DarenthMJS Limited, please contact your local authorised dealer.



DarenthMJS recommend and supply the complete range of EVERPURE water filtration technology.



DarenthMJS Ltd have a policy of continual improvement and reserve the right to modify and/ or change specifications without notice.

All dimensions and capacities shown are approximate and for guidance only. E & OE.

